



# Finsbury Park Unit Base

## Fees

Unit base: £1,350 + VAT per day  
Deposit (returnable): £1,000  
Admin fee: £150 – 175 + VAT

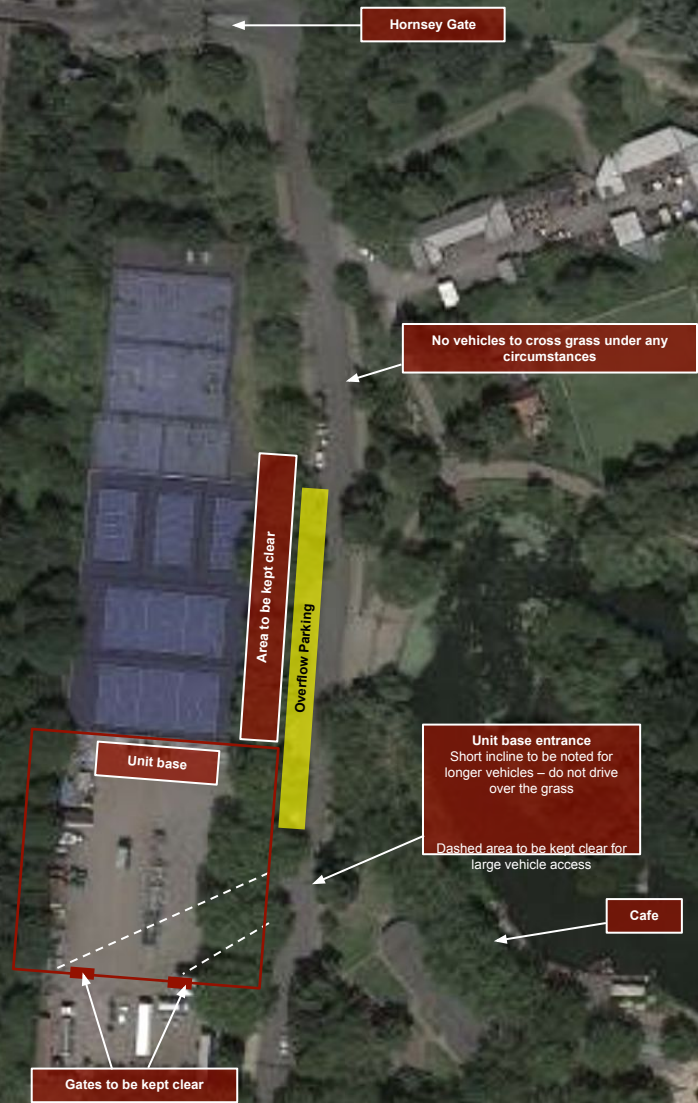
Lead in times  
3 working days (subject to availability)

Availability  
No restrictions to days or times

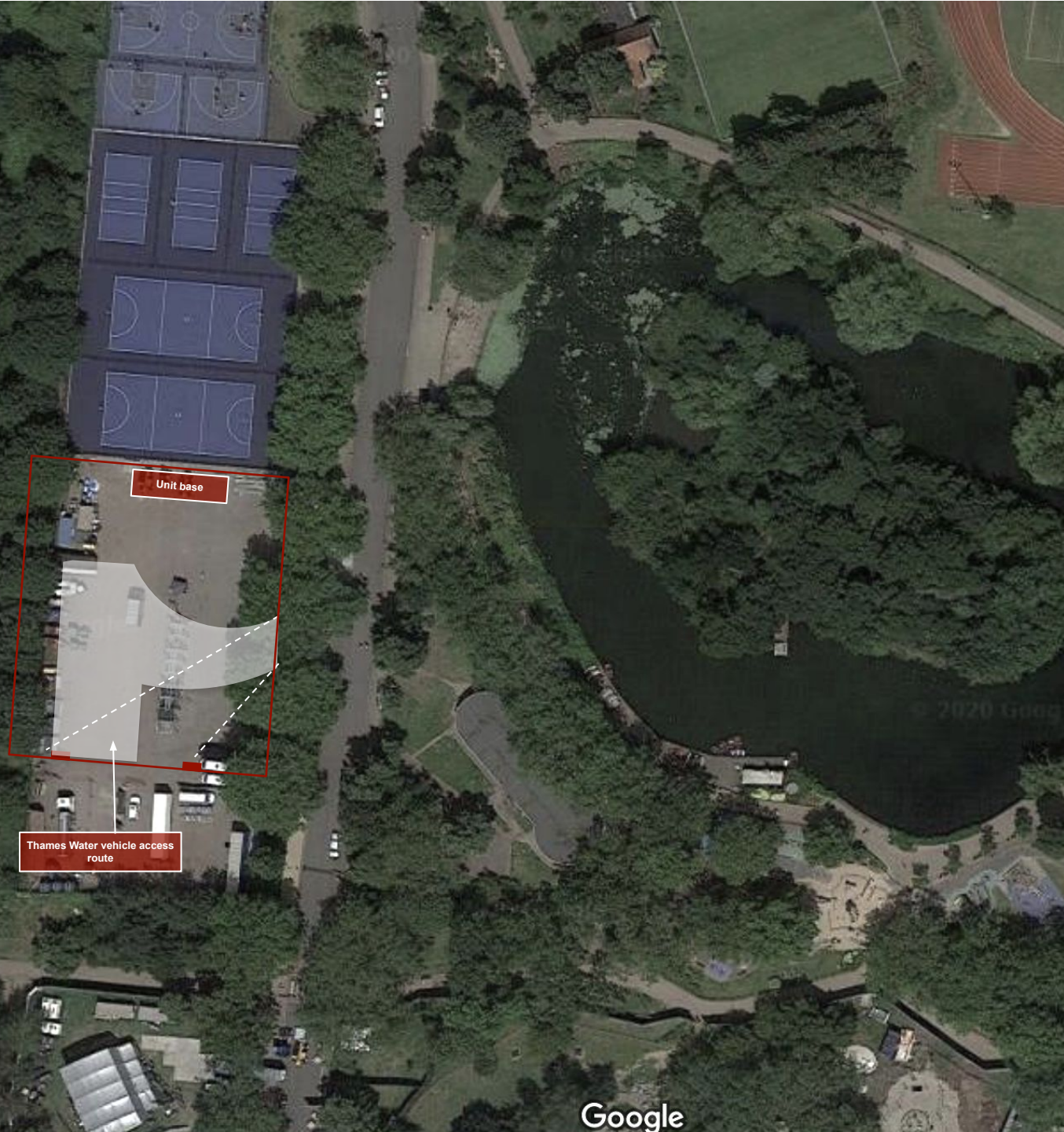
## Terms and Conditions

- **Site perimeter:** In Autumn 2020/early Winter 2021, a Thames Water unit will be in the space south of the UB perimeter indicated on the map
- **Site restrictions:** Strictly must not drive over any grass or park on any roads that have not otherwise been agreed upon
- **Access:** Key and combi code required for out-of-hours access for Hornsey Gate. Key available from the FilmFixer offices
- **Overflow Parking:** Additional parking on west side of road may be available, please speak to Film Officer. Once permitted vehicles must not park on the pavements
- **Water:** Unlimited water available privately from the building next to the café at £100 per day
- **Security:** 2 security guards required
- **Lighting:** 2-3 tower lights required
- **Thames Water Restrictions:** See separate image over

Please note that sites B and C have been retired as unit bases







## Finsbury Park Unit Base

Thames Water  
Restrictions

### **Additional restrictions when large Thames Water vehicle booked in**

White area needs to be clear for a large Arctic vehicle coming in and needs swing space.

Productions will be notified in advance if their dates coincide with this restriction.

After booking UB with ourselves, please contact Tom Shanahan (Site Manager) to coordinate shared use of the hardstanding on the below details.

**Tom Shanahan**  
Project Manager  
Mob: 07712-390-450

**Outlined areas are approximate,  
advanced recce and contact  
with Thames Water necessary**